



Monthly Report on Short-term Transactions of Electricity in India

March, 2020



Economics Division
Central Electricity Regulatory Commission
36, Janpath, Chanderlok Building



Contents

S.No.	Contents	Page No
	Contents	i
	List of Tables and Figures	ii
	Abbreviations	iii
	Introduction	1
I	Volume of Short-term Transactions of Electricity	1
II	Price of Short-term Transactions of Electricity	2
(i)	<i>Price of electricity transacted through Traders</i>	2
(ii)	<i>Price of electricity transacted through Power Exchanges</i>	3
(iii)	<i>Price of electricity transacted through DSM</i>	3
III	Trading Margin	3
IV	Volume of Short-term Transactions of Electricity (Regional Entity-wise)	4
V	Congestion on Inter-State Transmission Corridor for Day-Ahead Market on Power Exchanges	4
VI	Volume and Price of Renewable Energy Certificates (RECs)	5
VII	Inferences	7

List of Tables and Figures

S.No.	List of Tables and Figures	Page No.
I List of Tables		
Table-1	Volume of Short-term Transactions of Electricity in India	9
Table-2	Percentage Share of Electricity Transacted by Trading Licensees	11
Table-3	Price of Electricity Transacted through Traders	12
Table-4	Price of Electricity Transacted through Traders (Time-wise)	12
Table-5	Price of Electricity Transacted through Power Exchanges	12
Table-6	Volume and Price of Electricity in Term Ahead Market of IEX	12
Table-7	Volume and Price of Electricity in Term Ahead Market of PXIL	12
Table-8	Price of Electricity Transacted through DSM	12
Table-9	Volume of Electricity Sold through Bilateral	14
Table-10	Volume of Electricity Purchased through Bilateral	15
Table-11	Volume of Electricity Sold through Power Exchanges	16
Table-12	Volume of Electricity Purchased through Power Exchanges	18
Table-13	Volume of Electricity Under drawal through DSM	19
Table-14	Volume of Electricity Over drawal through DSM	22
Table-15	Total Volume of Net Short-term Transactions of Electricity (Regional Entity-wise)	25
Table-16	Details of Congestion in Power Exchanges	28
Table-17	Volume of Short-term Transactions of Electricity in India (Day-wise)	29
Table-18	Price of Electricity in Short-term Transactions (Day-wise)	30
Table-19	Volume of Short-term Transactions of Electricity (Regional Entity-wise)	31
Table-20	Volume and Price of Renewable Energy Certificates (RECs) Transacted through Power Exchanges	34
II List of Figures		
Figure-1	Volume of Short-term Transactions of Electricity	9
Figure-2	Volume of Various Kinds of Electricity Transactions in Total Electricity Generation	9
Figure-3	Volume of Short-term Transactions of Electricity (Day-wise)	10
Figure-4	Percentage Share of Electricity Transacted by Trading Licensees	11
Figure-5	Price of Electricity in Short-term Transactions	13
Figure-6	Price of Electricity in Short-term Transactions (Day-wise)	13

Abbreviations

Abbreviation	Expanded Version
ABSP_ANTP	Acme Bhiwadi Solar Power Private Limited, Anantpur
ACBIL	ACB (India) Limited
ACP	Area Clearing Price
ACV	Area Clearing Volume
ACME_SLR	ACME Solar Power Project
ACME_RUMS	Acme Rewa Ultra Mega Solar Project
ADY1_PVGD	Adyah Solar Energy Pvt Ltd., Block 1 Pavagada Solar Park
ADY13_PVGD	Adyah Solar Energy Pvt Ltd., Block 13 Pavagada Solar Park
ADY2_PVGD	Adyah Solar Energy Pvt Ltd., Block 2 Pavagada Solar Park
AGEMPL BHUJ	Adani Green Energy (MP) Ltd., Bhuj
AHSP_ANTP	Acme Hisar Solar Power Private Limited, Anantpur
AKS_PVGD	ACME Kurukshetra Solar Energy Pvt. Ltd
AKSP_ANTP	Acme Karnal Solar Power Private Limited, Anantpur
ARINSUM_RUMS	Solenergi Rewa Ultra Mega Solar Project
ARS_PVGD	ACME REWARI Solar Power Pvt Ltd.
AVAADA_PVGD	Avaada Solar Energy Private Ltd., Pavagada
AZURE_ANTP	Azure Power, Anantpur
AZURE_SLR	Azure Power Solar Power Project
AZURE34_SLR	Azure Power 34 Pvt. Ltd. Solar Power Project
BALCO	Bharat Aluminum Company Limited
BARC	Bhabha Atomic Research Centre
BBMB	Bhakra Beas Management Board
BETAM_TCN	Betam Wind Energy Private Limited, Tuticorin
BHADRAVATHI HVDC	Bhadravathi High Voltage Direct Current Link
BRBCL	Bhartiya Rail Bijlee Company Limited
CEA	Central Electricity Authority
CERC	Central Electricity Regulatory Commission
CGPL	Coastal Gujarat Power Limited
CHUKHA HEP	Chhukha Hydroelectric Project, Bhutan
CHUZACHEN HEP	Chuzachen Hydro Electric Power Project
CLEAN_SLR	Clean Solar Power Pvt. Ltd
COASTGEN	Coastal Energen Private Limited
DAGACHU	Dagachhu Hydro Power Corporation
DB POWER	Diligent Power Pvt. Ltd.
DCPP	Donga Mahua Captive Power Plant
DGEN MEGA POWER	DGEN Mega Power Project
DHARIWAL POWER	Dhariwal Power Station
DIKCHU HEP	Dikchu Hydro-electric Project, Sikkim
DOYANG HEP	Doyang Hydro Electric Project
DSM	Deviation Settlement Mechanism
DVC	Damodar Valley Corporation
EMCO	EMCO Energy Limited
ESSAR POWER	Essar Power Limited
ESSAR STEEL	Essar Steel Ltd
FORTUM_PVGD	Fortum Finnsurya Energy Private Ltd, Pavagada
FRV_ANTP	Fotowatio Renewable Ventures, Anantapur
FRV_NPK	Fotowatio Renewable Ventures, N P Kunta
GIWEL_BHUJ	Green infra wind energy Limited, Bhuj

GIWEL_TCN	Green Infra Wind Energy Limited, Tuticorin
GMR CHHATTISGARH	GMR Chhattisgarh Energy Limited
GMR KAMALANGA	GMR Kamalanga Energy Ltd.
HVDC ALPD	Alipurduar High Voltage Direct Current Link
HVDC CHAMPA	Champa-Kurukshetra High Voltage Direct Current Link
HVDC PUS	Pasauli High Voltage Direct Current Link
IEX	Indian Energy Exchange Limited
IGSTPS	Indira Gandhi Super Thermal Power Station Jhajjar
IL&FS	Infrastructure Leasing & Financial Services Limited
INOX_BHUJ	INOX Wind Limited, Bhuj, Gujarat
J&K	Jammu & Kashmir
JAYPEE NIGRIE	Jaypee Nigrie Super Thermal Power Project
JHABUA POWER MP	Jhabua Thermal Power Project
JINDAL POWER	Jindal Power Limited
JINDAL STAGE-II	Jindal Power Ltd Stage II
JITPL	Jindal India Thermal Power Ltd.
JORETHANG	Jorethang Loop Hydroelectric Power Project
KAPP 3&4	Kakrapar Atomic Power Station Unit 3 & 4
KARCHAM WANGTOO	Karcham Wangtoo H.E. Project
KORBA WEST POWER	Korba West Power Company Limited
KOTESHWAR	Koteshwar Hydro Power project
KSK MAHANADI	KSK Mahanadi Power Ltd
KURICHU HEP	Kurichhu Hydro-electric Power Station, Bhutan
LANKO_AMK	Lanco Amarkantak Power Private Limited
LANKO BUDHIL	Lanco Budhil Hydro Power Private Limited
LANKO KONDAPALLY	Lanco Kondapally Power Private Limited
LOKTAK	Loktak Power Project
MAHINDRA_RUMS	Mahindra Rewa Ultra Mega Solar Project
MAHOBASLR	Mahoba Solar Power Project
MALANA	Malana Hydroelectric Plant
MANGDECHU HEP	Mangdechhu Hydroelectric Project, Mangdechhu River, Bhutan
Maruti Coal	Maruti Clean Coal and Power Limited
MB POWER	MB Power Ltd
MEENAKSHI	Meenakshi Energy Private Limited
MP	Madhya Pradesh
MTPS II	Muzaffarpur Thermal Power Station – Stage II
MYTRAH_TCN	Mytrah Energy (India) Private Limited, Tuticorin
MUs	Million Units
NAPP	Narora Atomic Power Plant
NEEPCO	North Eastern Electric Power Corporation Limited
NEP	Nepal
NFL	National Fertilisers Limited
NHPC STATIONS	National Hydro Electric Power Corporation Ltd. Stations
NJPC	Nathpa Jhakri Hydroelectric Power Station
NLC	Neyveli Lignite Corporation Limited
NLDC	National Load Dispatch Centre
NPGC	Nabinagar Power Generating Company (Pvt.) Limited
NSPCL	NTPC - SAIL Power Company Private Limited
NTECL Vallur	NTPC Tamil Nadu Energy Company Limited Vallur
NTPC_ANTP	NTPC Anantapur

NTPC STATIONS	National Thermal Power Corporation Ltd. Stations
NTPL	NLC Tamil Nadu Power Limited
NVVN	NTPC Vidyut Vyapar Nigam Limited
ONGC Platana	ONGC Tripura Power Company
OPGC	Odisha Power Generation Corporation
ORANGE_TCN	Orange Renewable Power Pvt. Ltd, Tuticorin
OSTRO	Ostro Energy Private Limited
OTC	Over The Counter
PARAM_PVGD	Parampujya Solar Energy Private Ltd
PARE HEP	Pare hydroelectric project, Arunachal Pradesh
PX	Power Exchange
PXIL	Power Exchange India Limited
RAIL	Indian Railways
RAMPUR HEP	Rampur Hydro Electric Power Project
RANGIT HEP	Rangit Hydroelectric power project
RANGANADI HEP	Ranganadi Hydro Electric Power Project, Arunachal Pradesh
RAP-B	Rajasthan Atomic Power Plant-B
RAP-C	Rajasthan Atomic Power Plant-C
REC	Renewable Energy Certificate
REGL	Raigarh Energy Generation Limited
RENEW_BHACHAU	ReNew Power Limited, Bhachau
RENEW_PVGD	ReNew Wind Energy (TN2) Private Limited
RENEW_SLR	Renew Solar
RENEW_SLR_BKN	Renew Solar Bikaner
RGPPL	Ratnagiri Gas and Power Private Limited
RLDC	Regional Load Dispatch Centre
RPREL	Raipur Energen Limited
RTC	Round The Clock
Sasan UMPP	Sasan Ultra Mega Power Project
SB_SLR	Soft Bank Solar
SBG CLEANTECH_SLR	SBG Cleantech Ltd
SBG_NPK	SB Energy Solar Private Limited, NP Kunta
SBG_PVGD	SB Energy Solar Private Limited, Pavagada
SEMBCORP	Sembcorp Gayatri Power Ltd
SHREE CEMENT	Shree Cement Limited
SIMHAPURI	Simhapuri Energy Private Limited
SKS Power	SKS Power Generation Chhattisgarh Limited
SPECTRUM	Spectrum Power Generation Ltd
TALA HEP	Tala Hydroelectric Project, Bhutan
TASHIDENG HEP	Tashiding Hydro Electric Project, Sikkim
TATA_ANTP	TATA Power Anantapur
TATA_PVGD	Tata Power Renewable Energy Ltd
TATA_SLR	Tata Solar
TEESTA STG3	Teesta Stage 3 Hydro Power Project
TEHRI	Tehri Hydro Electric Power Project
THERMAL POWERTECH	Thermal Powertech Corporation India Limited
URI-II	Uri-II Hydropower Project
VINDHYACHAL HVDC	Vindhyachal High Voltage Direct Current Link
YARROW_PVGD	Yarrow Infra Structure Private Ltd

Introduction

A well-functioning electricity market requires an effective market monitoring process. As part of the market monitoring process, the monthly report on short-term transactions of electricity, is being prepared and posted on the website of CERC since August 2008. Here, “short-term transactions of electricity” refers to the contracts of less than one year period, for electricity transacted (inter-State) through inter-State Trading Licensees and directly by the Distribution Licensees, Power Exchanges (Indian Energy Exchange Ltd (IEX) and Power Exchange India Ltd (PXIL), and Deviation Settlement Mechanism (DSM). The objectives of the report are: (i) to observe the trends in volume and price of the short-term transactions of electricity; (ii) to analyse competition among the market players; (iii) to analyse effect of congestion on volume of electricity transacted through power exchanges; (iv) to provide information on volume and price of Renewable Energy Certificates (RECs) transacted through power exchanges; and (v) to disclose/disseminate all relevant market information. The details of the report for the month of **March, 2020** are as under:

I: Volume of Short-term Transactions of Electricity

During March 2020, total electricity generation excluding generation from renewable and captive power plants in India was 96063.00 MUs (Table-1).

Of the total electricity generation, 9512.61 MUs (9.90%) was transacted through short-term, comprising of 3971.24MUs (4.13%) through day ahead collective transactions on power exchanges, followed by 3752.82 MUs (3.91%) through bilateral (through traders and term-ahead contracts on power exchanges and directly between distribution companies) and 1788.55 MUs (1.86%) through DSM (Table-1 & Figure-2).

Of the total short-term transactions, day ahead collective transactions on power exchanges constitutes 41.75%, followed by 39.45% through bilateral (24.82% through traders and term-ahead contracts on power exchanges and 14.63% directly between distribution companies) and 18.80 % through DSM (Table-1 & Figure-1). Daily volume of short-term transactions is shown in Table-17 & Figure-3.

The percentage share of electricity traded by each trading licensee in the total volume of electricity traded by all the trading licensees is provided in Table-2 & Figure-4. The volume of electricity transacted by the trading licensees includes bilateral transactions and the transactions undertaken through power exchanges. There were 35 trading licensees as on March 2020. In March 2020, 23 trading licensees were engaged in short term trading. Top 5 trading licensees had a share of 72.83% in the total volume traded by all the licensees. These are PTC India Ltd., Adani Enterprises Ltd., Kreate Energy (I) Pvt. Ltd., Manikaran Power Ltd. and Tata Power Trading Company (P) Ltd.

Herfindahl-Hirschman Index (HHI) has been used for measuring the competition among the trading licensees. Increase in the HHI generally indicates decrease in competition and increase of market concentration, and vice versa. The HHI below 0.15 indicates non-concentration, HHI between 0.15 and 0.25 indicates moderate concentration and HHI above 0.25 indicates high concentration. The HHI has been computed based on the volume of electricity traded (inter-State & intra-State) by inter-State trading licensees, and it was 0.1498 for the month of March 2020, which indicates non-concentration of market power (Table-2).

The volume of electricity transacted through IEX in the day ahead market was 3971.24 MUs, while PXIL did not witness any transaction of electricity. The volume of total buy bids and sell bids was 4544.72 MUs and 12206.79 MUs respectively in IEX while the same was 0.00 MUs and 5.47 MUs respectively in PXIL. The variation in the volume of buy bids and sell bids placed through power exchanges shows variation in the demand and supply position.

The volume of electricity transacted through IEX and PXIL in the term-ahead market was 320.02 MUs and 18.91 MUs respectively (Table-6 & Table-7).

II: Price of Short-term Transactions of Electricity

(i) *Price of electricity transacted through Traders:* The minimum, maximum and weighted average sale prices have been computed for the electricity transacted through traders and the sale prices were ₹2.80/kWh, ₹5.17/kWh and ₹4.00/kWh respectively (Table-3). The weighted average sale prices were also computed for the transactions during

Round the Clock (RTC) and Off-peak periods separately, and the sale prices were ₹4.01/kWh and ₹3.92/kWh respectively. There were no transactions by traders during Peak periods in the month of March 2020 (Table-4).

(ii) Price of electricity transacted through Power Exchanges: The minimum, maximum and weighted average prices have been computed for the electricity transacted through IEX and PXIL. The minimum, maximum and weighted average prices were ₹0.60/kWh, ₹4.99/kWh and ₹2.56/kWh respectively in IEX, while no transactions were recorded on PXIL (Table-5).

The price of electricity transacted through IEX and PXIL in the term-ahead market was ₹3.33/kWh and ₹2.87/kWh respectively (Table-6 and Table-7).

(iii) Price of electricity transacted through DSM: The average deviation settlement price was ₹2.42/kWh. The minimum and maximum deviation settlement prices were ₹0.00/kWh and ₹8.00/kWh respectively (Table-8).

The prices of electricity transacted through trading licensees, power exchanges and DSM and their comparison is shown in Table-18, Figure-5 & 6.

III: Trading Margin

As per the CERC (Procedure, Terms and Conditions for grant of trading licence and other related matters) Regulations 2020, the trading licensees are allowed to charge trading margin of not less than 0 paise/kWh and upto 7 paise/kWh. The weighted average trading margin charged by the trading licensees for bilateral transactions during the month was ₹0.039/kWh.

IV: Volume of Short-term Transactions of Electricity (Regional Entity¹-Wise)

Of the total bilateral transactions, top 5 regional entities sold 41.29% of the volume, and these were Delhi, Haryana, DB Power, Madhya Pradesh and Sembcorp Gayatri Power Ltd. Top 5 regional entities purchased 61.00% of the volume, and these were Andhra Pradesh, Tamil Nadu, Telangana, Himachal Pradesh and Chhattisgarh (Table-9 & 10).

Of the total power exchange transactions, top 5 regional entities sold 38.66% of the volume, and these were Odisha, Uttar Pradesh, GMR Chhattisgarh Energy Limited, Bihar and Himachal Pradesh. Top 5 regional entities purchased 70.86% of the volume, and these were Telangana, Gujarat, Maharashtra, Andhra Pradesh and Tamil Nadu (Table-11 & 12).

Of the total DSM transactions, top 5 regional entities under drew 25.41% of the volume, and these were NTPC Station (Western Region), Rajasthan, Uttar Pradesh, Madhya Pradesh, and Maharashtra (Table-13). Top 5 regional entities overdrew 20.72% of the volume, and these were Tamil Nadu, Uttar Pradesh, Rajasthan, NTPC Station (Western Region) and Karnataka (Table-14).

Regional entity-wise total volume of net short-term transactions of electricity i.e. volume of net transactions through bilateral, power exchanges and DSM is shown in Table-15 & 19. Top 5 electricity selling regional entities were Delhi, Odisha, Madhya Pradesh, Sembcorp Gayatri Power Ltd. and GMR Chhattisgarh Energy Limited. Top 5 electricity purchasing regional entities were Telangana, Andhra Pradesh, Tamil Nadu, Maharashtra and Kerala.

V: Congestion² on Inter-State Transmission Corridor for Day-Ahead Market on Power Exchanges

Power Exchanges use a price discovery mechanism in which the aggregate demand and supply are matched to arrive at an unconstrained market price and volume. This step assumes that there is no congestion in the inter-State transmission system between different regions. However, in reality, the system operator (NLDC) in coordination with RLDCs limits

¹ In case of a state, the entities which are “selling” also include generators connected to state grid and the entities which are “buying” also include open access consumers.

² “Congestion” means a situation where the demand for transmission capacity exceeds the available transfer capability

the flow (due to congestion) in the inter-State transmission system. In such a situation, power exchanges adopt a mechanism called “Market Splitting”³.

In the month of March 2020, congestion only occurred in IEX. The details of congestion are shown in Table-16. The volume of electricity that could not be cleared due to congestion & other reasons and could not be transacted through power exchanges is the difference between unconstrained cleared volume and actual cleared volume.

During the month, the volume of electricity that could not be cleared in IEX due to congestion was 0.34% of the unconstrained cleared volume. In terms of time, congestion occurred was 1.68% in IEX (Table-16).

VI: Volume and Price of Renewable Energy Certificates (RECs)

The concept of Renewable Energy Certificates (RECs) seeks to address mismatch between availability of renewable energy and the requirement of the obligated entities to meet their renewable purchase obligation by purchasing green attributes of renewable energy remotely located in the form of RECs. The REC mechanism is a market based instrument, to promote renewable sources of energy and development of electricity market.

One REC is equivalent to 1 MWh electricity injected into the grid from renewable energy sources. The REC is exchanged only in the power exchanges approved by CERC within the band of a floor price and forbearance (ceiling) price as notified by CERC from time to time. The first REC trading was held on power exchanges in May, 2011.

The details of REC transactions for the month of March, 2020 are shown in Table-20. The market clearing volume of solar RECs transacted on IEX and PXIL were 39299 and 9383 respectively and the weighted average market clearing price of these RECs

³“ Market Splitting” is a mechanism adopted by Power Exchange where the market is split in the event of transmission congestion, into predetermined (by NLDC) bid areas or zones, which are cleared individually at their respective area prices such that the energy balance in every bid area is reached based upon the demand and supply in individual bid areas and using the available transmission corridor capacity between various bid areas simultaneously”
As a result of this market splitting the price of electricity in the importing region, where demand for electricity is more than supply, becomes relatively higher than the price of electricity in the exporting region.

was ₹2400/MWh in IEX and ₹2400/MWh in PXIL. Market clearing volume of non-solar RECs transacted on IEX and PXIL were 480379 and 309387 respectively and the weighted average market clearing price of these RECs was ₹ 1000/MWh in IEX and ₹ 1000/MWh in PXIL.

The gap between the volume of buy and sell bids of RECs placed through power exchanges shows about the variation in demand for both solar and non-solar RECs. For Solar RECs, the ratio of buy bids to sell bids was 5.44 and 0.25 in IEX and PXIL respectively. For non-solar RECs, the ratio of buy bids to sell bids was 0.18 and 0.13 in IEX and PXIL respectively.

VII: Inferences:

- The percentage of short-term transactions of electricity to total electricity generation was 9.90%.
- Of the total short-term transactions, day ahead collective transactions on power exchanges constitutes 41.75%, followed by 39.45% through bilateral (24.82% through traders and term-ahead contracts on power exchanges and 14.63% directly between distribution companies) and 18.80 % through DSM
- Top 5 trading licensees had a share of 72.83% in the total volume traded by all the trading licensees.
- The Herfindahl Hirschman Index computed for the volume of electricity traded by trading licensees was 0.1498, indicating non-concentration of market power.
- The weighted average price of electricity transacted through trading licensees was ₹4.00/kWh. The weighted average price of electricity transacted through IEX was ₹2.56/kWh while PXIL did not record any transaction of electricity.
- The average price of electricity transacted through DSM was ₹2.42/kWh.
- The weighted average trading margin charged by the trading licensees for bilateral transactions during the month was ₹0.039/kWh. The trading margin charged during the month was in line with the Trading Margin regulations.
- Top 5 electricity selling regional entities were Delhi, Odisha, Madhya Pradesh, Sembcorp Gayatri Power Ltd. and GMR Chhattisgarh Energy Limited. Top 5 electricity purchasing regional entities were Telangana, Andhra Pradesh, Tamil Nadu, Maharashtra and Kerala.
- During the month of March 2020, the volume of electricity that could not be cleared in IEX due to congestion was 0.34% of the unconstrained cleared volume. In terms of time, congestion occurred was 1.68% in IEX. PXIL did not witness any congestion.

- The market clearing volume of solar RECs transacted on IEX and PXIL were 39299 and 9383 respectively and the weighted average market clearing price of these RECs was ₹2400/MWh in IEX and ₹2400/MWh in PXIL. Market clearing volume of non-solar RECs transacted on IEX and PXIL were 480379 and 309387 respectively and the weighted average market clearing price of these RECs was ₹ 1000/MWh in IEX and ₹ 1000/MWh in PXIL.

Table-1: VOLUME OF SHORT-TERM TRANSACTIONS OF ELECTRICITY (ALL INDIA), MARCH 2020				
Sr. No	Short-term transactions	Volume (MUs)	% to Volume of short-term transactions	% to Total Generation
1	Bilateral	3752.82	39.45	3.91
	(i) Through Traders and PXs	2361.23	24.82	2.46
	(ii) Direct	1391.59	14.63	1.45
2	Through Power Exchanges	3971.24	41.75	4.13
	(i) IEX	3971.24	41.75	4.13
	(ii) PXIL	0.00	0.00	0.00
3	Through DSM	1788.55	18.80	1.86
	Total	9512.61	-	9.90
	Total Generation	96063.00	-	-

Source: NLDC & CEA Monthly Actual Generation Report- All India Summary, March 2020

Figure-1: Volume of Short-term Transactions of Electricity, March 2020

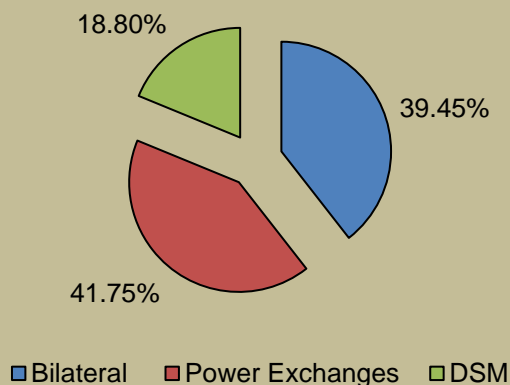


Figure-2: Volume of Various Kinds of Electricity Transactions in Total Electricity Generation, March 2020

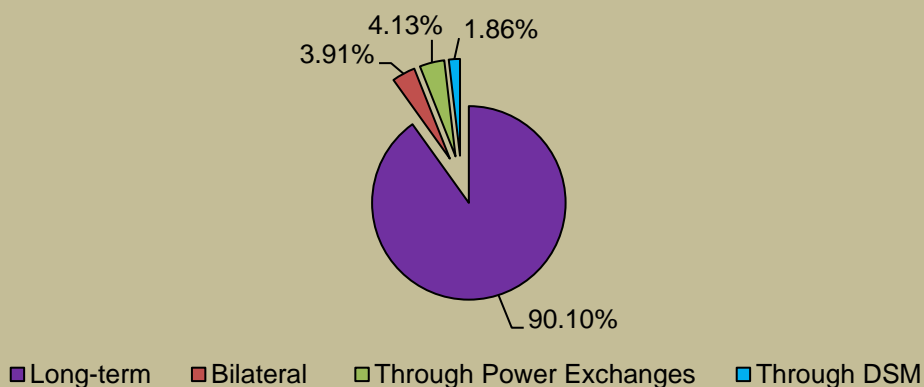


Figure-3: Volume of Short-term Transactions of Electricity, March 2020 (Day-wise)

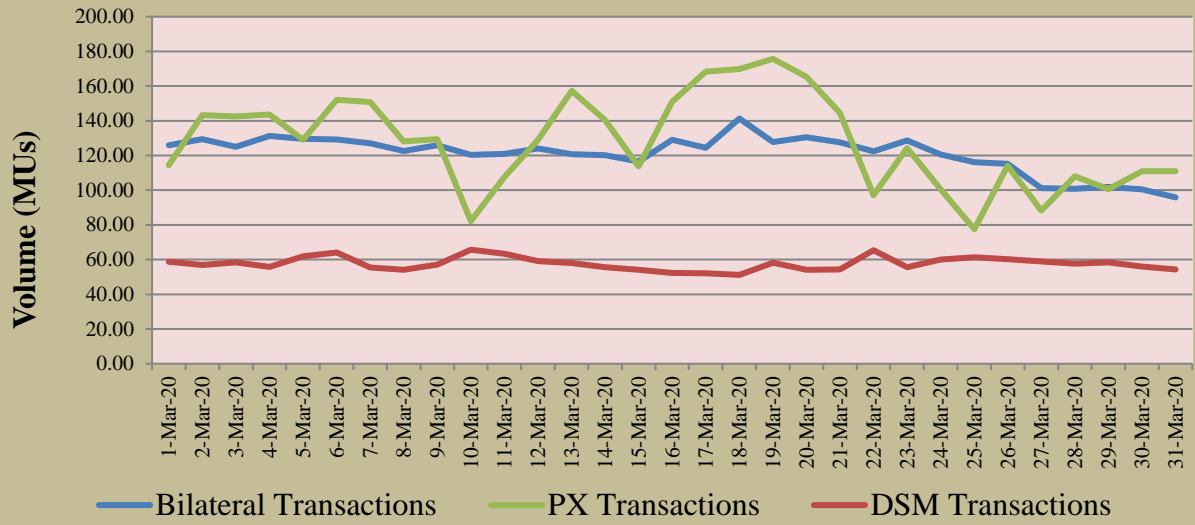


Table-2: PERCENTAGE SHARE OF ELECTRICITY TRANSACTED BY TRADING LICENSEES, MARCH 2020			
Sr.No	Name of the Trading Licensee	% Share in total Volume transacted by Trading Licensees	Herfindahl-Hirschman Index
1	PTC India Ltd.	29.28	0.0857
2	Adani Enterprises Ltd.	15.73	0.0247
3	Kreate Energy (I) Pvt. Ltd.	12.89	0.0166
4	Manikaran Power Ltd.	8.17	0.0067
5	Tata Power Trading Company (P) Ltd.	6.76	0.0046
6	NHPC Limited	6.70	0.0045
7	Arunachal Pradesh Power Corporation (P) ltd	5.12	0.0026
8	NTPC Vidyut Vyapar Nigam Ltd.	4.46	0.0020
9	GMR Energy Trading Ltd.	3.64	0.0013
10	Knowledge Infrastructure Systems (P) Ltd	2.69	0.0007
11	Instinct Infra & Power Ltd.	0.99	0.0001
12	National Energy Trading & Services Ltd.	0.79	0.0001
13	RPG Power Trading Company Ltd.	0.76	0.0001
14	Gita Power & Infrastructure Private Limited	0.59	0.0000
15	Statkraft Markets Pvt. Ltd.	0.31	0.0000
16	Essar Electric Power Development Corp. Ltd.	0.30	0.0000
17	Abja Power Private Limited	0.26	0.0000
18	Shree Cement Ltd.	0.24	0.0000
19	JSW Power Trading Company Ltd	0.14	0.0000
20	Customized Energy Solutions India (P) Ltd.	0.07	0.0000
21	Jaiprakash Associates Ltd.	0.04	0.0000
22	Phillip Commodities India (P) Ltd.	0.04	0.0000
23	NLC India Ltd.	0.01	0.0000
TOTAL		100.00%	0.1498
Top 5 trading licensees		72.83%	
<i>Note 1: Volume of electricity transacted by the trading licensees includes bilateral transactions (inter-state & intra-state) and the transactions undertaken through power exchanges.</i>			
<i>Note 2: Volume of electricity transacted by Global Energy Ltd is not included.</i>			
<i>Source: Information submitted by trading licensees</i>			

Figure 4: Percentage Share of Electricity Transacted by Trading Licensees, March 2020

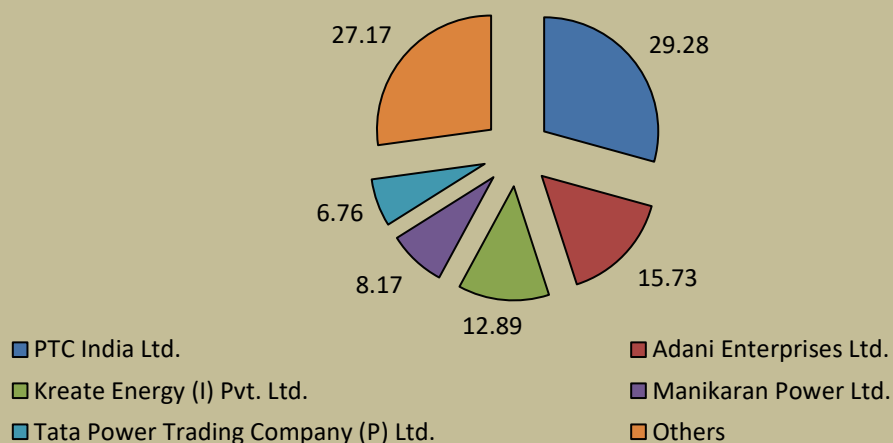


Table-3: PRICE OF ELECTRICITY TRANSACTED THROUGH TRADERS, MARCH 2020		
Sr.No	Item	Sale Price of Traders (₹/kWh)
1	Minimum	2.80
2	Maximum	5.17
3	Weighted Average	4.00

Source: Information submitted by trading licensees

Table-4: PRICE OF ELECTRICITY TRANSACTED THROUGH TRADERS (TIME-WISE), MARCH 2020		
Sr.No	Period of Trade	Sale Price of Traders (₹/kWh)
1	RTC	4.01
2	PEAK	-
3	OFF PEAK	3.92

Source: Information submitted by trading licensees

Table-5: PRICE OF ELECTRICITY TRANSACTED THROUGH POWER EXCHANGES, MARCH 2020			
Sr.No	ACP	Price in IEX (₹/kWh)	Price in PXIL (₹/kWh)
1	Minimum	0.60	-
2	Maximum	4.99	-
3	Weighted Average	2.56	-

Source: Information submitted by IEX and PXIL

Table-6: VOLUME AND PRICE OF ELECTRICITY IN TERM AHEAD MARKET OF IEX, MARCH 2020			
Sr.No	Term ahead contracts	Actual Scheduled Volume (MUs)	Weighted Average Price (₹/kWh)
1	Intra-Day Contracts	32.64	2.91
2	Day Ahead Contingency Contracts	45.72	3.01
3	Daily Contracts	177.60	3.65
4	Weekly Contracts	64.05	2.89
	Total	320.02	3.33

Source: IEX

Table-7: VOLUME AND PRICE OF ELECTRICITY IN TERM AHEAD MARKET OF PXIL, MARCH 2020			
Sr.No	Term ahead contracts	Actual Scheduled Volume (MUs)	Weighted Average Price (₹/kWh)
1	Intra-Day Contracts	10.57	2.98
2	Any Day(s) Contracts	7.91	2.72
3	Day Ahead Contingency Contracts	0.43	3.04
	Total	18.91	2.87

Source: PXIL

Table-8: PRICE OF ELECTRICITY TRANSACTED THROUGH DSM, MARCH 2020		
Sr.No	Item	Price in All India Grid (₹/kWh)
1	Minimum	0.00
2	Maximum	8.00
3	Average	2.42

Source: NLDC

Figure-5: Price of Short-term Transactions of Electricity, March 2020

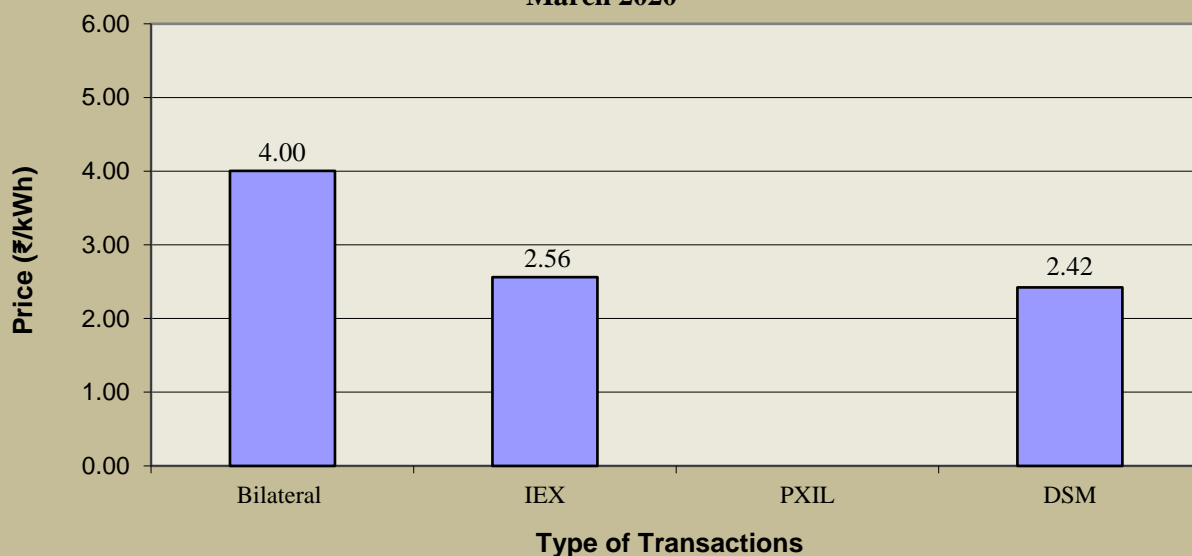
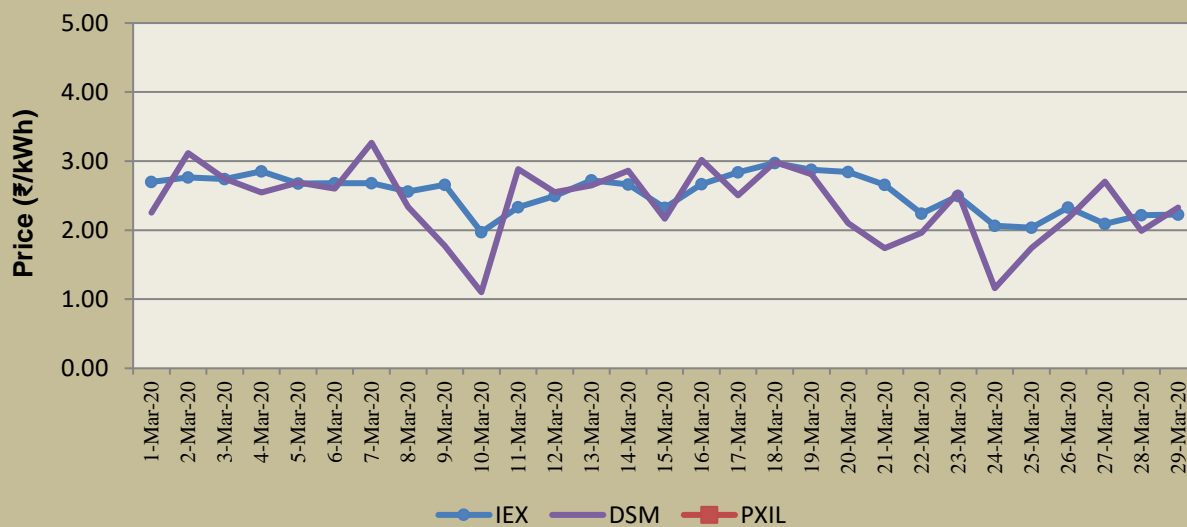


Figure-6: Price of Short-term Transactions of Electricity, March 2020 (Day-wise)



Note: In PXIL, No transactions were recorded during the month of March 2020.

Table-9: VOLUME OF ELECTRICITY SOLD THROUGH BILATERAL, MARCH 2020		
Name of the Entity	Volume of Sale (MUs)	% of Volume
DELHI	498.79	13.17
HARYANA	315.72	8.33
DB POWER	266.77	7.04
MP	245.26	6.48
SEBPCORP	237.56	6.27
GUJARAT	233.43	6.16
PUNJAB	233.28	6.16
RKM POWER	228.56	6.03
COASTGEN	143.97	3.80
KARNATAKA	130.50	3.45
JAYPEE NIGRIE	129.88	3.43
ADHUNIK POWER LTD	121.27	3.20
ESSAR POWER	120.11	3.17
REGL	110.93	2.93
DVC	99.74	2.63
RPREL	68.64	1.81
RAJASTHAN	67.43	1.78
ODISHA	66.12	1.75
JITPL	65.88	1.74
IL&FS	61.44	1.62
SHREE CEMENT	56.73	1.50
MAHARASHTRA	47.31	1.25
THERMAL POWERTECH	32.78	0.87
J & K	32.39	0.86
SKS POWER	23.28	0.61
ONGC PALATANA	22.38	0.59
WEST BENGAL	17.21	0.45
BIHAR	17.09	0.45
ANDHRA PRADESH	15.68	0.41
DAGACHU	15.00	0.40
HIMACHAL PRADESH	13.41	0.35
BALCO	13.07	0.35
CHUZACHEN HEP	9.34	0.25
TELANGANA	8.49	0.22
LANKO_AMK	4.96	0.13
JHABUA POWER_MP	4.54	0.12
TAMIL NADU	2.57	0.07
MEGHALAYA	2.33	0.06
ACBIL	1.06	0.03
NTPC STATIONS-NR	0.90	0.02
JHARKHAND	0.56	0.01
DGEN MEGA POWER	0.54	0.01
NTPC STATIONS-ER	0.46	0.01
CHHATTISGARH	0.35	0.01
NTPC STATIONS-NER	0.09	0.002
Total	3787.85	100.00
Volume Sold by top 5 Regional Entities	1564.10	41.29

Table-10: VOLUME OF ELECTRICITY PURCHASED THROUGH BILATERAL, MARCH 2020

Name of the Entity	Volume of Purchase (MUs)	% of Volume
ANDHRA PRADESH	679.20	18.10
TAMIL NADU	612.09	16.31
TELANGANA	440.07	11.73
HIMACHAL PRADESH	281.75	7.51
CHHATTISGARH	276.25	7.36
KERALA	186.68	4.97
MAHARASHTRA	186.18	4.96
NEPAL(NVVN)	153.29	4.08
BIHAR	130.61	3.48
WEST BENGAL	128.04	3.41
ESSAR STEEL	123.46	3.29
JHARKHAND	121.27	3.23
UTTARAKHAND	77.91	2.08
ASSAM	58.40	1.56
MEGHALAYA	47.80	1.27
HARYANA	36.62	0.98
RAJASTHAN	34.63	0.92
MANIPUR	32.91	0.88
DELHI	26.03	0.69
GOA	19.76	0.53
BANGLADESH	19.22	0.51
ARUNACHAL PRADESH	18.85	0.50
UTTAR PRADESH	14.88	0.40
NAGALAND	12.71	0.34
MP	11.10	0.30
GUJARAT	7.29	0.19
SIKKIM	6.51	0.17
PUNJAB	6.16	0.16
ODISHA	2.27	0.06
DVC	0.72	0.02
DADRA & NAGAR HAVELI	0.11	0.003
KARNATAKA	0.05	0.001
TOTAL	3752.82	100.00
Volume Purchased by top 5 Regional Entities	2289.37	61.00

Table-11: VOLUME OF ELECTRICITY SOLD THROUGH POWER EXCHANGES, MARCH 2020		
Name of the Entity	Volume of Sale (MUs)	% of Volume
ODISHA	374.83	9.44
UTTAR PRADESH	346.05	8.71
GMR CHATTISGARH	313.68	7.90
BIHAR	267.99	6.75
HIMACHAL PRADESH	232.83	5.86
RAJASTHAN	218.35	5.50
GUJARAT	196.95	4.96
CHHATTISGARH	180.99	4.56
TEESTA STG3	136.50	3.44
ASSAM	126.14	3.18
REGL	108.74	2.74
DGEN MEGA POWER	105.75	2.66
SKS POWER	100.81	2.54
JHARKHAND	94.09	2.37
MP	93.20	2.35
DELHI	91.51	2.30
JINDAL STAGE-II	81.75	2.06
UTTARAKHAND	80.39	2.02
SEMBCORP	75.55	1.90
SPECTRUM	55.04	1.39
MB POWER	52.74	1.33
JITPL	47.53	1.20
JINDAL POWER	47.47	1.20
ACBIL	44.81	1.13
THERMAL POWERTECH	40.76	1.03
MARUTI COAL	39.73	1.00
JHABUA POWER_MP	35.28	0.89
GOA	27.41	0.69
CHANDIGARH	27.26	0.69
NLC	26.30	0.66
DB POWER	21.92	0.55
NTPC STATIONS-WR	21.23	0.53
NJPC	20.44	0.51
KARNATAKA	19.75	0.50
SIKKIM	18.50	0.47
ESSAR POWER	16.56	0.42
WEST BENGAL	14.86	0.37
JAYPEE NIGRIE	14.69	0.37
KARCHAM WANGTOO	14.31	0.36
TRIPURA	13.19	0.33
AD HYDRO	12.52	0.32
JORETHANG	11.24	0.28
SAINJ HEP	10.59	0.27
DIKCHU HEP	9.36	0.24
TASHIDENG HEP	9.15	0.23
MIZORAM	8.98	0.23
HARYANA	8.93	0.22
TAMIL NADU	8.34	0.21

MANIPUR	8.09	0.20
DADRA & NAGAR HAVELI	5.97	0.15
ANDHRA PRADESH	5.92	0.15
ARUNACHAL PRADESH	5.81	0.15
TELANGANA	3.78	0.10
MAHARASHTRA	3.74	0.09
NTPC STATIONS-ER	3.11	0.08
KERALA	2.56	0.06
IL&FS	1.51	0.04
CHUZACHEN HEP	1.49	0.04
NTPC STATIONS-SR	1.21	0.03
NTPC STATIONS-NR	0.92	0.02
LANCO BUDHIL	0.90	0.02
DVC	0.77	0.02
J & K	0.28	0.01
NTPL	0.10	0.002
ONGC PALATANA	0.05	0.001
SHREE CEMENT	0.03	0.001
DHARIWAL POWER	0.00	0.0001
Total	3971.24	100.00
Volume sold by top 5 Regional Entities	1535.39	38.66

Table-12: VOLUME OF ELECTRICITY PURCHASED THROUGH POWER EXCHANGES, MARCH 2020		
Name of the Entity	Volume of Purchase (MUs)	% of Volume
TELANGANA	1134.30	28.56
GUJARAT	548.81	13.82
MAHARASHTRA	429.20	10.81
ANDHRA PRADESH	404.56	10.19
TAMIL NADU	297.02	7.48
J & K	206.47	5.20
HARYANA	140.20	3.53
DELHI	129.95	3.27
RAJASTHAN	99.37	2.50
PUNJAB	91.29	2.30
KARNATAKA	76.57	1.93
UTTAR PRADESH	61.34	1.54
DADRA & NAGAR HAVELI	53.07	1.34
KERALA	40.91	1.03
ASSAM	39.48	0.99
ODISHA	38.29	0.96
HIMACHAL PRADESH	37.23	0.94
UTTARAKHAND	29.11	0.73
DAMAN AND DIU	24.17	0.61
MEGHALAYA	20.36	0.51
ESSAR STEEL	18.28	0.46
WEST BENGAL	12.89	0.32
GOA	10.28	0.26
MP	9.36	0.24
BIHAR	7.85	0.20
CHHATTISGARH	5.72	0.14
TRIPURA	3.10	0.08
MANIPUR	1.39	0.04
CHANDIGARH	0.36	0.01
ARUNACHAL PRADESH	0.35	0.01
TOTAL	3971.24	100.00
Volume purchased by top 5 Regional Entities	2813.88	70.86

Table-13: VOLUME OF ELECTRICITY UNDER DRAWAL (EXPORTED) THROUGH DSM, MARCH 2020

Name of the Entity	Volume of Under drawal (MUs)	% of Volume
NTPC STATIONS-WR	122.26	6.35
RAJASTHAN	118.91	6.18
UTTAR PRADESH	87.64	4.56
MP	80.89	4.20
MAHARASHTRA	79.29	4.12
GUJARAT	78.85	4.10
BIHAR	70.15	3.65
KARNATAKA	67.64	3.52
NHPC STATIONS	61.51	3.20
SASAN UMPP	53.24	2.77
NTPC STATIONS-NR	52.07	2.71
J & K	50.93	2.65
PUNJAB	50.38	2.62
NTPC STATIONS-ER	46.64	2.42
CHHATTISGARH	46.40	2.41
HIMACHAL PRADESH	46.29	2.41
KERALA	45.45	2.36
NLC	44.24	2.30
DELHI	38.88	2.02
HARYANA	35.40	1.84
ODISHA	34.76	1.81
ANDHRA PRADESH	30.94	1.61
UTTARAKHAND	30.15	1.57
PONDICHERRY	28.50	1.48
JHARKHAND	26.14	1.36
NTPC STATIONS-SR	26.06	1.35
GIWEL_BHUI	22.07	1.15
WEST BENGAL	20.73	1.08
DVC	20.23	1.05
ESSAR STEEL	17.20	0.89
GOA	15.16	0.79
CHUKHA HEP	13.72	0.71
BBMB	12.48	0.65
OSTRO	12.35	0.64
JINDAL STAGE-II	11.48	0.60
RENEW_BHACHAU	10.79	0.56
NEPAL(NVVN)	8.77	0.46
NJPC	8.32	0.43
BANGLADESH	8.24	0.43
EMCO	8.19	0.43
BRBCL,NABINAGAR	8.02	0.42
NEEPCO STATIONS	7.96	0.41
ASSAM	7.31	0.38
MB POWER	7.03	0.37
TRIPURA	6.90	0.36
CLEAN_SLR	6.66	0.35
CGPL	5.90	0.31
CHANDIGARH	5.89	0.31
AGEMPL BHUI	5.62	0.29
ARUNACHAL PRADESH	5.58	0.29
SIKKIM	5.42	0.28
MAITHON POWER LTD	5.20	0.27
GIWEL_TCN	4.99	0.26

TEESTA HEP	4.87	0.25
TAMIL NADU	4.85	0.25
MAHINDRA_RUMS	4.73	0.25
RENEW_SLR_BKN	4.72	0.25
TATA_PVGD	4.53	0.24
ACBIL	4.31	0.22
SEMBCORP	4.26	0.22
MANGDECHU HEP	4.26	0.22
BARC	4.01	0.21
RAMPUR HEP	3.98	0.21
ARINSUM_RUMS	3.97	0.21
TATA_SLR	3.96	0.21
MAHOBASLR	3.83	0.20
ACME_SLR	3.72	0.19
DADRA & NAGAR HAVELI	3.70	0.19
RAIL	3.57	0.19
JAYPEE NIGRIE	3.56	0.19
INOX_BHUJ	3.53	0.18
SB_SLR	3.53	0.18
MYTRAH_TCN	3.50	0.18
AZURE_SLR	3.38	0.18
ACME_RUMS	3.34	0.17
SBG_NPK	3.13	0.16
COASTGEN	3.09	0.16
MEGHALAYA	3.01	0.16
TEHRI	3.01	0.16
MANIPUR	3.00	0.16
NTPC_ANTP	2.71	0.14
LANKO_AMK	2.70	0.14
TATA_ANTP	2.69	0.14
MIZORAM	2.61	0.14
RAP C	2.60	0.14
NPGC	2.59	0.13
AZURE34_SLR	2.50	0.13
JINDAL POWER	2.49	0.13
DB POWER	2.45	0.13
ORANGE_TCN	2.39	0.12
TEESTA STG3	2.30	0.12
NTPL	2.27	0.12
KOTESHWAR	2.23	0.12
AVAADA_PVGD	2.12	0.11
NTPC STATIONS-NER	2.09	0.11
PARAM_PVGD	2.04	0.11
KORBA WEST POWER	2.03	0.11
GMR CHATTISGARH	2.00	0.10
THERMAL POWERTECH	1.99	0.10
RKM POWER	1.98	0.10
NAGALAND	1.97	0.10
KARCHAM WANGTOO	1.70	0.09
RAP B	1.69	0.09
SBG_PVGD	1.60	0.08
TELANGANA	1.56	0.08
KSK MAHANADI	1.49	0.08
RANGANADI HEP	1.40	0.07
JITPL	1.36	0.07
FORTUM_PVGD	1.35	0.07
SKS POWER	1.34	0.07
MTPS II	1.23	0.06

NSPCL	1.15	0.06
BETAM_TCN	1.13	0.06
RENEW_PVGD	1.07	0.06
FRV_ANTP	1.03	0.05
FRV_NPK	1.02	0.05
JHABUA POWER_MP	0.97	0.05
NEP	0.96	0.05
DHARIWAL POWER	0.88	0.05
NETCL VALLUR	0.87	0.05
RENEW_SLR	0.85	0.04
IGSTPS	0.85	0.04
AHSP_ANTP	0.85	0.04
AZURE_ANTP	0.83	0.04
ADHUNIK POWER LTD	0.82	0.04
ADY13_PVGD	0.81	0.04
LOKTAK	0.81	0.04
DAMAN AND DIU	0.80	0.04
AKSP_ANTP	0.78	0.04
DGEN MEGA POWER	0.76	0.04
ONGC PALATANA	0.72	0.04
ESSAR POWER	0.72	0.04
JORETHANG	0.71	0.04
ADY2_PVGD	0.69	0.04
NAPP	0.66	0.03
RANGIT HEP	0.65	0.03
ADY1_PVGD	0.62	0.03
CHUZACHEN HEP	0.62	0.03
AKS_PVGD	0.61	0.03
TASHIDENG HEP	0.59	0.03
DIKCHU HEP	0.58	0.03
AD HYDRO	0.57	0.03
ARS_PVGD	0.57	0.03
GMR KAMALANGA	0.56	0.03
SAINJ HEP	0.54	0.03
KURICHU HEP	0.53	0.03
RGPPL (DABHOL)	0.50	0.03
YARROW_PVGD	0.49	0.03
LANCO BUDHIL	0.45	0.02
ABSP_ANTP	0.44	0.02
PARE HEP	0.41	0.02
HVDC CHAMPA	0.27	0.01
BHADRAVATHI HVDC	0.26	0.01
VINDHYACHAL HVDC	0.22	0.01
SHREE CEMENT	0.19	0.01
NFF	0.19	0.01
DOYANG HEP	0.19	0.01
HVDC ALPD	0.17	0.01
HVDC PUS	0.16	0.01
IL&FS	0.13	0.01
BALCO	0.09	0.005
TALA HEP	0.04	0.002
DAGACHU	0.02	0.001
DCPP	0.01	0.001
Total	1924.12	100.00
Volume Exported by top 5 Regional Entities	489.00	25.41

Table-14: VOLUME OF ELECTRICITY OVER DRAWAL (IMPORTED) THROUGH DSM, MARCH 2020

Name of the Entity	Volume of Over drawal (MUs)	% of Volume
TAMIL NADU	81.34	4.92
UTTAR PRADESH	75.85	4.59
RAJASTHAN	67.67	4.09
NTPC STATIONS-WR	63.32	3.83
KARNATAKA	54.37	3.29
NTPC STATIONS-NR	52.04	3.15
GUJARAT	50.73	3.07
ANDHRA PRADESH	50.72	3.07
WEST BENGAL	50.22	3.04
MAHARASHTRA	45.85	2.77
NTPC STATIONS-ER	44.35	2.68
HARYANA	44.26	2.68
TALA HEP	43.60	2.64
KERALA	42.97	2.60
BIHAR	38.86	2.35
TELANGANA	36.73	2.22
NTPC STATIONS-SR	36.64	2.22
MP	34.48	2.09
DVC	33.91	2.05
CGPL	27.12	1.64
PUNJAB	25.29	1.53
NLC	24.89	1.51
UTTARAKHAND	21.79	1.32
RGPL (DABHOL)	21.46	1.30
BALCO	20.76	1.26
NHPC STATIONS	19.63	1.19
ESSAR STEEL	19.14	1.16
ODISHA	17.17	1.04
GIWEL_BHUI	16.05	0.97
JHARKHAND	15.40	0.93
CHHATTISGARH	14.59	0.88
HIMACHAL PRADESH	14.18	0.86
KURICHU HEP	12.75	0.77
ASSAM	11.79	0.71
J & K	11.66	0.71
NETCL VALLUR	10.33	0.62
DAMAN AND DIU	9.85	0.60
JHABUA POWER_MP	9.79	0.59
GMR CHATTISGARH	9.53	0.58
MEGHALAYA	8.96	0.54
CHUKHA HEP	8.51	0.51
MYTRAH_TCN	8.50	0.51
BANGLADESH	8.41	0.51
GIWEL_TCN	8.38	0.51
ADHUNIK POWER LTD	8.10	0.49
OSTRO	7.99	0.48
ORANGE_TCN	7.68	0.46
KORBA WEST POWER	7.49	0.45
JINDAL STAGE-II	7.45	0.45
DELHI	7.44	0.45
MAHINDRA_RUMS	7.29	0.44
RENEW_BHACHAU	7.22	0.44
GMR KAMALANGA	6.49	0.39
EMCO	6.32	0.38

NTPC STATIONS-NER	5.92	0.36
THERMAL POWERTECH	5.81	0.35
AGEMPL BHUJ	5.55	0.34
CLEAN_SLR	5.49	0.33
RAP C	5.46	0.33
RAP B	5.46	0.33
JITPL	5.41	0.33
ARINSUM_RUMS	5.34	0.32
TRIPURA	5.30	0.32
BBMB	5.22	0.32
IL&FS	4.91	0.30
NAPP	4.79	0.29
NEPAL(NVVN)	4.69	0.28
NJPC	4.64	0.28
IGSTPS	4.58	0.28
BRBCL,NABINAGAR	4.50	0.27
DB POWER	4.50	0.27
NPGC	4.29	0.26
ACME_RUMS	4.27	0.26
NEP	4.23	0.26
GOA	4.05	0.24
MANGDECHU HEP	3.99	0.24
RAIL	3.94	0.24
DADRA & NAGAR HAVELI	3.90	0.24
SEMBCORP	3.89	0.24
RENEW_SLR_BKN	3.78	0.23
MAITHON POWER LTD	3.67	0.22
NTPL	3.61	0.22
TEESTA STG3	3.51	0.21
CHANDIGARH	3.44	0.21
MB POWER	3.42	0.21
AVAADA_PVGD	3.37	0.20
INOX_BHUJ	3.18	0.19
SBG_NPK	3.08	0.19
ARUNACHAL PRADESH	3.07	0.19
SB_SLR	2.92	0.18
AZURE_SLR	2.82	0.17
KAPP 3&4	2.81	0.17
SKS POWER	2.70	0.16
ACME_SLR	2.65	0.16
DAGACHU	2.63	0.16
SHREE CEMENT	2.57	0.16
TEHRI	2.55	0.15
MTPS II	2.52	0.15
NTPC_ANTP	2.50	0.15
TATA_PVGD	2.47	0.15
MIZORAM	2.36	0.14
KARCHAM WANGTOO	2.28	0.14
JINDAL POWER	2.27	0.14
SBG_PVGD	2.26	0.14
MAHOBA_SLR	2.23	0.14
SIKKIM	2.21	0.13
NAGALAND	2.11	0.13
KOTESHWAR	2.10	0.13
ACBIL	2.08	0.13
MANIPUR	2.05	0.12
PONDICHERRY	2.04	0.12
ESSAR POWER	1.96	0.12

BETAM_TCN	1.93	0.12
ABSP_ANTP	1.91	0.12
ONGC PALATANA	1.89	0.11
DGEN MEGA POWER	1.80	0.11
SASAN UMPP	1.78	0.11
NSPCL	1.69	0.10
PARAM_PVGD	1.69	0.10
TATA_SLR	1.68	0.10
KSK MAHANADI	1.64	0.10
COASTGEN	1.51	0.09
FORTUM_PVGD	1.45	0.09
AZURE34_SLR	1.38	0.08
NEEPCO STATIONS	1.29	0.08
LANKO_AMK	1.20	0.07
JORETHANG	1.20	0.07
ADY1_PVGD	1.15	0.07
RKM POWER	1.13	0.07
ADY2_PVGD	1.11	0.07
RAMPUR HEP	1.09	0.07
ADY13_PVGD	1.04	0.06
YARROW_PVGD	0.99	0.06
RANGANADI HEP	0.96	0.06
JAYPEE NIGRIE	0.96	0.06
RENEW_SLR	0.87	0.05
HVDC CHAMPA	0.80	0.05
DIKCHU HEP	0.79	0.05
DHARIWAL POWER	0.78	0.05
RENEW_PVGD	0.69	0.04
ARS_PVGD	0.69	0.04
TASHIDENG HEP	0.66	0.04
CHUZACHEN HEP	0.64	0.04
LANKO KONDAPALLI	0.63	0.04
FRV_NPK	0.61	0.04
AKSP_ANTP	0.58	0.03
AHSP_ANTP	0.57	0.03
AKS_PVGD	0.56	0.03
MEENAKSHI	0.56	0.03
TATA_ANTP	0.55	0.03
FRV_ANTP	0.52	0.03
RANGIT HEP	0.49	0.03
AZURE_ANTP	0.47	0.03
SIMHAPURI	0.42	0.03
AD HYDRO	0.37	0.02
TRN ENERGY	0.37	0.02
LOKTAK	0.31	0.02
TEESTA HEP	0.25	0.01
DOYANG HEP	0.21	0.01
NFF	0.15	0.01
PARE HEP	0.11	0.01
LANCO BUDHIL	0.10	0.01
SAINJ HEP	0.08	0.005
BHADRAVATHI HVDC	0.03	0.002
HVDC ALPD	0.02	0.001
HVDC PUS	0.01	0.001
DCPP	0.01	0.001
TOTAL	1652.99	100.00
Volume Imported by top 5 Regional Entities	342.53	20.72

Table-15: TOTAL VOLUME OF NET SHORT-TERM TRANSACTIONS OF ELECTRICITY (REGIONAL ENTITY-WISE), MARCH 2020		
S. No.	Name of the Entity	Total volume of net short-term transactions of electricity*
1	TELANGANA	1597.26
2	ANDHRA PRADESH	1081.94
3	TAMIL NADU	974.69
4	MAHARASHTRA	530.89
5	KERALA	222.55
6	NEPAL(NVVN)	149.20
7	ESSAR STEEL	143.67
8	WEST BENGAL	138.35
9	J & K	134.53
10	GUJARAT	97.60
11	MEGHALAYA	71.77
12	CHHATTISGARH	68.82
13	DADRA & NAGAR HAVELI	47.41
14	TALA HEP	43.56
15	HIMACHAL PRADESH	40.63
16	DAMAN AND DIU	33.22
17	MANIPUR	25.26
18	CGPL	21.22
19	RGPPL (DABHOL)	20.96
20	BANGLADESH	19.39
21	UTTARAKHAND	18.27
22	JHARKHAND	15.87
23	NAGALAND	12.85
24	KURICHU HEP	12.22
25	ARUNACHAL PRADESH	10.88
26	NETCL VALLUR	9.46
27	NTPC STATIONS-SR	9.37
28	BALCO	7.60
29	GMR KAMALANGA	5.93
30	KORBA WEST POWER	5.46
31	ORANGE_TCN	5.29
32	MYTRAH_TCN	5.00
33	NAPP	4.13
34	RAP B	3.77
35	NTPC STATIONS-NER	3.74
36	IGSTPS	3.73
37	GIWEL_TCN	3.40
38	NEP	3.27
39	RAP C	2.86
40	KAPP 3&4	2.81
41	MAHINDRA_RUMS	2.56
42	NPGC	1.70
43	ABSP_ANTP	1.46
44	ARINSUM_RUMS	1.36
45	MTPS II	1.29
46	AVAADA_PVGD	1.25
47	NTPL	1.24
48	ACME_RUMS	0.93
49	BETAM_TCN	0.79
50	SBG_PVGD	0.66
51	LANKO KONDAPALLI	0.63
52	MEENAKSHI	0.56
53	NSPCL	0.54
54	HVDC CHAMPA	0.54
55	ADY1_PVGD	0.53

56	YARROW_PVGD	0.49
57	ADY2_PVGD	0.43
58	SIMHAPURI	0.42
59	RAIL	0.37
60	TRN ENERGY	0.37
61	ADY13_PVGD	0.23
62	KSK MAHANADI	0.15
63	ARS_PVGD	0.12
64	FORTUM_PVGD	0.11
65	DOYANG HEP	0.02
66	RENEW_SLR	0.02
67	DCPP	-0.002
68	NFF	-0.04
69	SBG_NPK	-0.05
70	AKS_PVGD	-0.05
71	AGEMPL BHUJ	-0.07
72	DHARIWAL POWER	-0.10
73	KOTESHWAR	-0.14
74	HVDC PUS	-0.15
75	HVDC ALPD	-0.15
76	RANGIT HEP	-0.17
77	AKSP_ANTP	-0.21
78	NTPC_ANTP	-0.21
79	VINDHYACHAL HVDC	-0.22
80	BHADRAVATHI HVDC	-0.23
81	MANGDECHU HEP	-0.27
82	AHSP_ANTP	-0.28
83	PARE HEP	-0.30
84	PARAM_PVGD	-0.35
85	INOX_BHUJ	-0.35
86	AZURE_ANTP	-0.36
87	RENEW_PVGD	-0.38
88	FRV_NPK	-0.41
89	RANGANADI HEP	-0.44
90	TEHRI	-0.45
91	LOKTAK	-0.50
92	FRV_ANTP	-0.51
93	AZURE_SLR	-0.56
94	SB_SLR	-0.61
95	RENEW_SLR_BKN	-0.94
96	ACME_SLR	-1.08
97	AZURE34_SLR	-1.12
98	CLEAN_SLR	-1.17
99	LANCO BUDHIL	-1.24
100	MAITHON POWER LTD	-1.53
101	MAHOBA_SLR	-1.60
102	NTPC STATIONS-NR	-1.85
103	EMCO	-1.87
104	TATA_PVGD	-2.06
105	TATA_ANTP	-2.14
106	TATA_SLR	-2.28
107	RAMPUR HEP	-2.89
108	BRBCL,NABINAGAR	-3.52
109	RENEW_BHACHAU	-3.57
110	BARC	-4.01
111	OSTRO	-4.37
112	TEESTA HEP	-4.62
113	CHUKHA HEP	-5.21
114	NTPC STATIONS-ER	-5.86
115	GIWEL_BHUJ	-6.02
116	LANKO_AMK	-6.46

117	NEEPCO STATIONS	-6.67
118	BBMB	-7.26
119	GOA	-8.48
120	TASHIDENG HEP	-9.08
121	DIKCHU HEP	-9.16
122	MIZORAM	-9.23
123	JORETHANG	-10.76
124	CHUZACHEN HEP	-10.81
125	SAINJ HEP	-11.05
126	TRIPURA	-11.69
127	DAGACHU	-12.39
128	AD HYDRO	-12.72
129	KARCHAM WANGTOO	-13.72
130	SIKKIM	-15.20
131	ONGC PALATANA	-21.26
132	ASSAM	-23.78
133	NJPC	-24.12
134	PONDICHERRY	-26.47
135	CHANDIGARH	-29.35
136	JHABUA POWER_MP	-31.00
137	MARUTI COAL	-39.73
138	NHPC STATIONS	-41.88
139	NLC	-45.65
140	JINDAL POWER	-47.70
141	ACBIL	-48.10
142	SASAN UMPP	-51.46
143	SHREE CEMENT	-54.37
144	SPECTRUM	-55.04
145	MB POWER	-56.35
146	IL&FS	-58.17
147	RPREL	-68.64
148	THERMAL POWERTECH	-69.72
149	NTPC STATIONS-WR	-80.17
150	JINDAL STAGE-II	-85.78
151	DVC	-86.11
152	KARNATAKA	-86.90
153	DGEN MEGA POWER	-105.25
154	JITPL	-109.37
155	ADHUNIK POWER LTD	-113.99
156	SKS POWER	-122.73
157	TEESTA STG3	-135.30
158	ESSAR POWER	-135.43
159	HARYANA	-138.96
160	COASTGEN	-145.55
161	JAYPEE NIGRIE	-147.18
162	PUNJAB	-160.93
163	BIHAR	-177.91
164	RAJASTHAN	-203.03
165	REGL	-219.67
166	RKM POWER	-229.42
167	UTTAR PRADESH	-281.63
168	DB POWER	-286.63
169	GMR CHATTISGARH	-306.15
170	SEMBCORP	-313.48
171	MP	-364.42
172	ODISHA	-417.99
173	DELHI	-465.77
* Total volume of net short-term transactions of electricity includes net of transactions of electricity through bilateral, power exchange and UI		
(-) indicates sale and (+) indicates purchase		

Table-16: DETAILS OF CONGESTION IN POWER EXCHANGES, MARCH 2020			
	Details of Congestion	IEX	PXIL
A	Unconstrained Cleared Volume (MUs)	3984.93	0.00
B	Actual Cleared Volume and hence scheduled (MUs)	3971.24	0.00
C	Volume of electricity that could not be cleared and hence not scheduled because of congestion (MUs)*	13.69	0.00
D	Volume of electricity that could not be cleared and hence not scheduled because of reasons other than congestion (MUs)	0.00	0.00
E	Volume of electricity that could not be cleared as % to Unconstrained Cleared Volume	0.34%	-
F	Percentage of the time congestion occurred during the month (Number of hours congestion occurred/Total number of hours in the month)	1.68%	-
G	Congestion occurrence (%) time block wise		
	0.00 - 6.00 hours	0.00%	-
	6.00 - 12.00 hours	70.00%	-
	12.00 - 18.00 hours	30.00%	-
	18.00 - 24.00 hours	0.00%	-
<i>*This power would have been scheduled had there been no congestion.</i>			
<i>Source: IEX & PXIL & NLDC</i>			

Table-17: VOLUME OF SHORT-TERM TRANSACTIONS OF ELECTRICITY IN INDIA (DAY-WISE) (MUs), MARCH 2020

Date	Bilateral		Power Exchange (Area Clearing Volume [#] of Day Ahead Market)		Deviation Settlement (Over Drawl+Under Generation)	Total Electricity Generation (MU) as given at CEA Website*
	Through Traders and PXs**	Direct	IEX	PXIL		
1-Mar-20	77.34	48.62	114.45	0.00	58.76	3254.63
2-Mar-20	76.91	52.58	143.34	0.00	56.92	3463.60
3-Mar-20	74.03	50.89	142.48	0.00	58.41	3513.69
4-Mar-20	78.24	52.96	143.56	0.00	55.71	3441.74
5-Mar-20	77.95	51.63	128.98	0.00	61.84	3377.12
6-Mar-20	78.89	50.41	152.20	0.00	64.08	3284.07
7-Mar-20	78.23	48.84	150.83	0.00	55.37	3352.06
8-Mar-20	78.21	44.39	128.16	0.00	54.12	3261.30
9-Mar-20	77.69	48.21	129.49	0.00	57.14	3241.11
10-Mar-20	72.82	47.63	82.23	0.00	65.70	2916.85
11-Mar-20	72.81	48.20	107.61	0.00	63.46	3039.96
12-Mar-20	77.94	46.09	129.04	0.00	59.19	3219.70
13-Mar-20	74.80	45.96	157.35	0.00	57.95	3304.45
14-Mar-20	74.00	46.17	140.50	0.00	55.61	3261.83
15-Mar-20	72.70	43.77	113.71	0.00	54.23	3115.48
16-Mar-20	83.81	45.19	151.08	0.00	52.28	3309.42
17-Mar-20	77.72	46.68	168.30	0.00	52.03	3424.07
18-Mar-20	95.23	46.07	169.81	0.00	51.19	3493.17
19-Mar-20	80.10	47.67	175.71	0.00	58.11	NA
20-Mar-20	81.88	48.61	165.36	0.00	54.10	NA
21-Mar-20	79.38	48.21	144.59	0.00	54.39	NA
22-Mar-20	78.54	43.95	97.05	0.00	65.33	NA
23-Mar-20	77.97	50.65	124.31	0.00	55.57	NA
24-Mar-20	77.68	42.94	100.48	0.00	59.97	NA
25-Mar-20	75.44	40.66	77.55	0.00	61.42	NA
26-Mar-20	74.92	40.31	114.13	0.00	60.23	NA
27-Mar-20	68.04	33.09	88.30	0.00	58.95	NA
28-Mar-20	67.57	33.31	107.93	0.00	57.58	NA
29-Mar-20	69.00	32.97	100.68	0.00	58.47	NA
30-Mar-20	67.57	32.88	111.02	0.00	56.03	NA
31-Mar-20	63.80	32.07	111.03	0.00	54.40	NA
Total	2361.23	1391.59	3971.24	0.00	1788.55	96063.00^{\$}

Source: NLDC & CEA Monthly Actual Generation Report- All India Summary, March 2020

* Gross Electricity Generation excluding electricity generation from renewables and captive power plants.

** The volume of bilateral through PXs represents the volume through term-ahead contracts.

Area Clearing Volume represents the scheduled volume of all the bid areas.

NA – Not Available

^{\$} Actual Total Generation for the month of March 2020 as per CEA Monthly Actual Generation Report. Data of Daily Generation not available beyond 18th March 2020.

Table-18: PRICE OF SHORT-TERM TRANSACTIONS OF ELECTRICITY (DAY-WISE)(₹/kWh), MARCH 2020									
Market Segment	Day ahead market of IEX			Day ahead market of PXIL			Under Drawl/Over Drawl from the Grid (DSM)		
Date	Minimum ACP	Maximum ACP	Weighted Average Price*	Minimum ACP	Maximum ACP	Weighted Average Price*	All India Grid		
							Minimum Price	Maximum Price	Average Price**
1-Mar-20	2.04	3.62	2.70	-	-	-	0.00	6.66	2.25
2-Mar-20	2.07	3.64	2.77	-	-	-	0.00	8.00	3.12
3-Mar-20	2.23	3.29	2.74	-	-	-	0.00	6.67	2.75
4-Mar-20	2.21	4.31	2.85	-	-	-	0.00	6.39	2.55
5-Mar-20	1.94	4.68	2.68	-	-	-	0.00	7.67	2.69
6-Mar-20	2.04	4.99	2.68	-	-	-	0.00	8.00	2.60
7-Mar-20	2.02	3.11	2.68	-	-	-	0.00	8.00	3.27
8-Mar-20	2.00	3.10	2.56	-	-	-	0.00	5.59	2.34
9-Mar-20	2.00	3.18	2.66	-	-	-	0.00	4.28	1.77
10-Mar-20	0.90	2.70	1.97	-	-	-	0.00	3.82	1.10
11-Mar-20	1.80	2.99	2.33	-	-	-	0.00	8.00	2.89
12-Mar-20	2.00	2.95	2.50	-	-	-	0.00	8.00	2.55
13-Mar-20	2.20	3.12	2.72	-	-	-	0.00	6.33	2.65
14-Mar-20	2.22	3.20	2.66	-	-	-	0.00	7.33	2.86
15-Mar-20	1.88	2.99	2.32	-	-	-	0.00	7.29	2.17
16-Mar-20	2.22	3.16	2.67	-	-	-	0.00	6.65	3.02
17-Mar-20	2.30	3.34	2.84	-	-	-	0.00	5.72	2.51
18-Mar-20	2.49	3.64	2.97	-	-	-	0.00	8.00	2.99
19-Mar-20	2.34	4.15	2.87	-	-	-	0.00	8.00	2.81
20-Mar-20	2.34	4.31	2.84	-	-	-	0.00	5.74	2.10
21-Mar-20	2.00	4.20	2.66	-	-	-	0.00	7.67	1.74
22-Mar-20	0.90	2.56	2.24	-	-	-	0.00	8.00	1.96
23-Mar-20	1.94	4.00	2.49	-	-	-	0.00	5.59	2.55
24-Mar-20	0.90	2.51	2.06	-	-	-	0.00	5.75	1.16
25-Mar-20	0.60	2.47	2.03	-	-	-	0.00	5.73	1.74
26-Mar-20	1.80	2.85	2.33	-	-	-	0.00	8.00	2.17
27-Mar-20	1.36	2.51	2.09	-	-	-	0.00	8.00	2.70
28-Mar-20	1.80	2.67	2.22	-	-	-	0.00	7.64	1.99
29-Mar-20	1.59	2.85	2.23	-	-	-	0.00	8.00	2.33
30-Mar-20	1.61	2.86	2.22	-	-	-	0.00	8.00	2.97
31-Mar-20	1.60	3.19	2.19	-	-	-	0.00	8.00	2.82
	0.60[#]	4.99[#]	2.56	-	-	-	0.00[#]	8.00[#]	2.42

Source: Data on price of PX transactions from IEX and PXIL and data on DSM Price from NLDC.

* Weighted average price computed based on Area Clearing Volume (ACV) and Area Clearing Price (ACP) for each hour of the day. Here, ACV and ACP represent the scheduled volume and weighted average price of all the bid areas of power exchanges.

** Simple average price of DSM of 96 time blocks of 15 minutes each in a day. DSM price includes Ceiling DSM Rate +40% additional DSM charge.

Maximum/Minimum in the month

**Table-19: VOLUME OF SHORT-TERM TRANSACTIONS OF ELECTRICITY (REGIONAL ENTITY*-WISE) (MUs),
MARCH 2020**

Name of the Entity	Through Bilateral			Through Power Exchange			Through DSM with Regional Grid			Total Net***
	Sale	Purchase	Net**	Sale	Purchase	Net**	Import (Over Draw)	Export (Under Draw)	Net**	
PUNJAB	233.28	6.16	-227.12	0.00	91.29	91.29	25.29	50.38	-25.09	-160.93
HARYANA	315.72	36.62	-279.10	8.93	140.20	131.27	44.26	35.40	8.87	-138.96
RAJASTHAN	67.43	34.63	-32.80	218.35	99.37	-118.98	67.67	118.91	-51.24	-203.03
DELHI	498.79	26.03	-472.76	91.51	129.95	38.44	7.44	38.88	-31.45	-465.77
UP	0.00	14.88	14.88	346.05	61.34	-284.72	75.85	87.64	-11.80	-281.63
UTTARAKHAND	0.00	77.91	77.91	80.39	29.11	-51.28	21.79	30.15	-8.36	18.27
HIMACHAL P	13.41	281.75	268.34	232.83	37.23	-195.60	14.18	46.29	-32.10	40.63
J & K	32.39	0.00	-32.39	0.28	206.47	206.19	11.66	50.93	-39.27	134.53
CHANDIGARH	0.00	0.00	0.00	27.26	0.36	-26.90	3.44	5.89	-2.45	-29.35
MP	245.26	11.10	-234.17	93.20	9.36	-83.84	34.48	80.89	-46.40	-364.42
MAHARASHTRA	47.31	186.18	138.87	3.74	429.20	425.46	45.85	79.29	-33.44	530.89
GUJARAT	233.43	7.29	-226.14	196.95	548.81	351.86	50.73	78.85	-28.12	97.60
CHHATTISGARH	0.35	276.25	275.90	180.99	5.72	-175.27	14.59	46.40	-31.81	68.82
GOA	0.00	19.76	19.76	27.41	10.28	-17.13	4.05	15.16	-11.11	-8.48
DAMAN & DIU	0.00	0.00	0.00	0.00	24.17	24.17	9.85	0.80	9.05	33.22
DADRA & NAGAR H	0.00	0.11	0.11	5.97	53.07	47.10	3.90	3.70	0.20	47.41
ANDHRA P	15.68	679.20	663.52	5.92	404.56	398.64	50.72	30.94	19.78	1081.94
KARNATAKA	130.50	0.05	-130.45	19.75	76.57	56.82	54.37	67.64	-13.27	-86.90
KERALA	0.00	186.68	186.68	2.56	40.91	38.35	42.97	45.45	-2.49	222.55
TAMIL NADU	2.57	612.09	609.52	8.34	297.02	288.69	81.34	4.85	76.48	974.69
PONDICHERRY	0.00	0.00	0.00	0.00	0.00	0.00	2.04	28.50	-26.47	-26.47
TELANGANA	8.49	440.07	431.58	3.78	1134.30	1130.51	36.73	1.56	35.16	1597.26
WEST BENGAL	17.21	128.04	110.83	14.86	12.89	-1.97	50.22	20.73	29.50	138.35
ODISHA	66.12	2.27	-63.86	374.83	38.29	-336.54	17.17	34.76	-17.59	-417.99
BIHAR	17.09	130.61	113.52	267.99	7.85	-260.14	38.86	70.15	-31.29	-177.91
JHARKHAND	0.56	121.27	120.71	94.09	0.00	-94.09	15.40	26.14	-10.74	15.87
SIKKIM	0.00	6.51	6.51	18.50	0.00	-18.50	2.21	5.42	-3.21	-15.20
DVC	99.74	0.72	-99.03	0.77	0.00	-0.77	33.91	20.23	13.68	-86.11
ARUNACHAL P	0.00	18.85	18.85	5.81	0.35	-5.46	3.07	5.58	-2.51	10.88
ASSAM	0.00	58.40	58.40	126.14	39.48	-86.66	11.79	7.31	4.47	-23.78
MANIPUR	0.00	32.91	32.91	8.09	1.39	-6.70	2.05	3.00	-0.95	25.26
MEGHALAYA	2.33	47.80	45.47	0.00	20.36	20.36	8.96	3.01	5.94	71.77
MIZORAM	0.00	0.00	0.00	8.98	0.00	-8.98	2.36	2.61	-0.25	-9.23
NAGALAND	0.00	12.71	12.71	0.00	0.00	0.00	2.11	1.97	0.14	12.85
TRIPURA	0.00	0.00	0.00	13.19	3.10	-10.09	5.30	6.90	-1.60	-11.69
NTPC STS-NR	0.90	0.00	-0.90	0.92	0.00	-0.92	52.04	52.07	-0.02	-1.85
NHPC STNS	0.00	0.00	0.00	0.00	0.00	0.00	19.63	61.51	-41.88	-41.88
NFF	0.00	0.00	0.00	0.00	0.00	0.00	0.15	0.19	-0.04	-0.04
RAIL	0.00	0.00	0.00	0.00	0.00	0.00	3.94	3.57	0.37	0.37
NEP	0.00	0.00	0.00	0.00	0.00	0.00	4.23	0.96	3.27	3.27
NAPP	0.00	0.00	0.00	0.00	0.00	0.00	4.79	0.66	4.13	4.13
RAP B	0.00	0.00	0.00	0.00	0.00	0.00	5.46	1.69	3.77	3.77
NJPC	0.00	0.00	0.00	20.44	0.00	-20.44	4.64	8.32	-3.68	-24.12
TEHRI	0.00	0.00	0.00	0.00	0.00	0.00	2.55	3.01	-0.45	-0.45
BBMB	0.00	0.00	0.00	0.00	0.00	0.00	5.22	12.48	-7.26	-7.26
RAP C	0.00	0.00	0.00	0.00	0.00	0.00	5.46	2.60	2.86	2.86
AD HYDRO	0.00	0.00	0.00	12.52	0.00	-12.52	0.37	0.57	-0.21	-12.72
IGSTPS	0.00	0.00	0.00	0.00	0.00	0.00	4.58	0.85	3.73	3.73
KOTESHWAR	0.00	0.00	0.00	0.00	0.00	0.00	2.10	2.23	-0.14	-0.14
KARCHAM WANGT	0.00	0.00	0.00	14.31	0.00	-14.31	2.28	1.70	0.58	-13.72
SHREE CEMENT	56.73	0.00	-56.73	0.03	0.00	-0.03	2.57	0.19	2.38	-54.37
LANCO BUDHIL	0.00	0.00	0.00	0.90	0.00	-0.90	0.10	0.45	-0.35	-1.24
RAMPUR HEP	0.00	0.00	0.00	0.00	0.00	0.00	1.09	3.98	-2.89	-2.89
SAINJ HEP	0.00	0.00	0.00	10.59	0.00	-10.59	0.08	0.54	-0.46	-11.05
RENEW_SLR	0.00	0.00	0.00	0.00	0.00	0.00	0.87	0.85	0.02	0.02

AZURE_SLR	0.00	0.00	0.00	0.00	0.00	0.00	2.82	3.38	-0.56	-0.56
SB_SLR	0.00	0.00	0.00	0.00	0.00	0.00	2.92	3.53	-0.61	-0.61
MAHOBASL	0.00	0.00	0.00	0.00	0.00	0.00	2.23	3.83	-1.60	-1.60
ACME_SLR	0.00	0.00	0.00	0.00	0.00	0.00	2.65	3.72	-1.08	-1.08
AZURE34_SLR	0.00	0.00	0.00	0.00	0.00	0.00	1.38	2.50	-1.12	-1.12
TATA_SLR	0.00	0.00	0.00	0.00	0.00	0.00	1.68	3.96	-2.28	-2.28
RENEW_SLR_BKN	0.00	0.00	0.00	0.00	0.00	0.00	3.78	4.72	-0.94	-0.94
CLEAN_SLR	0.00	0.00	0.00	0.00	0.00	0.00	5.49	6.66	-1.17	-1.17
NTPC STNS-WR	0.00	0.00	0.00	21.23	0.00	-21.23	63.32	122.26	-58.94	-80.17
BHADRAVATHI HV	0.00	0.00	0.00	0.00	0.00	0.00	0.03	0.26	-0.23	-0.23
VINDHYACHAL HV	0.00	0.00	0.00	0.00	0.00	0.00	0.00	0.22	-0.22	-0.22
JINDAL POWER	0.00	0.00	0.00	47.47	0.00	-47.47	2.27	2.49	-0.23	-47.70
LANKO_AMK	4.96	0.00	-4.96	0.00	0.00	0.00	1.20	2.70	-1.50	-6.46
NSPCL	0.00	0.00	0.00	0.00	0.00	0.00	1.69	1.15	0.54	0.54
ACBIL	1.06	0.00	-1.06	44.81	0.00	-44.81	2.08	4.31	-2.23	-48.10
BALCO	13.07	0.00	-13.07	0.00	0.00	0.00	20.76	0.09	20.67	7.60
RGPPL (DABHOL)	0.00	0.00	0.00	0.00	0.00	0.00	21.46	0.50	20.96	20.96
CGPL	0.00	0.00	0.00	0.00	0.00	0.00	27.12	5.90	21.22	21.22
DCPP	0.00	0.00	0.00	0.00	0.00	0.00	0.01	0.01	0.00	0.00
EMCO	0.00	0.00	0.00	0.00	0.00	0.00	6.32	8.19	-1.87	-1.87
ESSAR STEEL	0.00	123.46	123.46	0.00	18.28	18.28	19.14	17.20	1.94	143.67
KSK MAHANADI	0.00	0.00	0.00	0.00	0.00	0.00	1.64	1.49	0.15	0.15
ESSAR POWER	120.11	0.00	-120.11	16.56	0.00	-16.56	1.96	0.72	1.24	-135.43
JINDAL STAGE-II	0.00	0.00	0.00	81.75	0.00	-81.75	7.45	11.48	-4.02	-85.78
DB POWER	266.77	0.00	-266.77	21.92	0.00	-21.92	4.50	2.45	2.05	-286.63
DHARIWAL POWER	0.00	0.00	0.00	0.00	0.00	0.00	0.78	0.88	-0.10	-0.10
JAYPEE NIGRIE	129.88	0.00	-129.88	14.69	0.00	-14.69	0.96	3.56	-2.60	-147.18
DGEN MEGA POWER	0.54	0.00	-0.54	105.75	0.00	-105.75	1.80	0.76	1.04	-105.25
GMR CHATTISGARH	0.00	0.00	0.00	313.68	0.00	-313.68	9.53	2.00	7.53	-306.15
KORBA WEST POWER	0.00	0.00	0.00	0.00	0.00	0.00	7.49	2.03	5.46	5.46
MB POWER	0.00	0.00	0.00	52.74	0.00	-52.74	3.42	7.03	-3.61	-56.35
MARUTI COAL	0.00	0.00	0.00	39.73	0.00	-39.73	0.00	0.00	0.00	-39.73
SPECTRUM	0.00	0.00	0.00	55.04	0.00	-55.04	0.00	0.00	0.00	-55.04
JHABUA POWER_M	4.54	0.00	-4.54	35.28	0.00	-35.28	9.79	0.97	8.83	-31.00
SASAN UMPP	0.00	0.00	0.00	0.00	0.00	0.00	1.78	53.24	-51.46	-51.46
TRN ENERGY	0.00	0.00	0.00	0.00	0.00	0.00	0.37	0.00	0.37	0.37
RKM POWER	228.56	0.00	-228.56	0.00	0.00	0.00	1.13	1.98	-0.85	-229.42
SKS POWER	23.28	0.00	-23.28	100.81	0.00	-100.81	2.70	1.34	1.36	-122.73
BARC	0.00	0.00	0.00	0.00	0.00	0.00	0.00	4.01	-4.01	-4.01
KAPP 3&4	0.00	0.00	0.00	0.00	0.00	0.00	2.81	0.00	2.81	2.81
HVDC CHAMPA	0.00	0.00	0.00	0.00	0.00	0.00	0.80	0.27	0.54	0.54
MAHINDRA_RUMS	0.00	0.00	0.00	0.00	0.00	0.00	7.29	4.73	2.56	2.56
ARINSUM_RUMS	0.00	0.00	0.00	0.00	0.00	0.00	5.34	3.97	1.36	1.36
OSTRO	0.00	0.00	0.00	0.00	0.00	0.00	7.99	12.35	-4.37	-4.37
ACME_RUMS	0.00	0.00	0.00	0.00	0.00	0.00	4.27	3.34	0.93	0.93
RENEW_BHACHAU	0.00	0.00	0.00	0.00	0.00	0.00	7.22	10.79	-3.57	-3.57
GIWEL_BHUJ	0.00	0.00	0.00	0.00	0.00	0.00	16.05	22.07	-6.02	-6.02
INOX_BHUJ	0.00	0.00	0.00	0.00	0.00	0.00	3.18	3.53	-0.35	-0.35
AGEMPL_BHUJ	0.00	0.00	0.00	0.00	0.00	0.00	5.55	5.62	-0.07	-0.07
REGL	110.93	0.00	-110.93	108.74	0.00	-108.74	0.00	0.00	0.00	-219.67
RPREL	68.64	0.00	-68.64	0.00	0.00	0.00	0.00	0.00	0.00	-68.64
NTPC STNS-SR	0.00	0.00	0.00	1.21	0.00	-1.21	36.64	26.06	10.58	9.37
LANKO KONDAPAI	0.00	0.00	0.00	0.00	0.00	0.00	0.63	0.00	0.63	0.63
SIMHAPURI	0.00	0.00	0.00	0.00	0.00	0.00	0.42	0.00	0.42	0.42
MEENAKSHI	0.00	0.00	0.00	0.00	0.00	0.00	0.56	0.00	0.56	0.56
COASTGEN	143.97	0.00	-143.97	0.00	0.00	0.00	1.51	3.09	-1.58	-145.55
THERMAL POWER	32.78	0.00	-32.78	40.76	0.00	-40.76	5.81	1.99	3.82	-69.72
IL&FS	61.44	0.00	-61.44	1.51	0.00	-1.51	4.91	0.13	4.78	-58.17
NLC	0.00	0.00	0.00	26.30	0.00	-26.30	24.89	44.24	-19.35	-45.65
SEMBCORP	237.56	0.00	-237.56	75.55	0.00	-75.55	3.89	4.26	-0.37	-313.48
NETCL VALLUR	0.00	0.00	0.00	0.00	0.00	0.00	10.33	0.87	9.46	9.46
NTPL	0.00	0.00	0.00	0.10	0.00	-0.10	3.61	2.27	1.34	1.24

AHSP_ANTP	0.00	0.00	0.00	0.00	0.00	0.00	0.57	0.85	-0.28	-0.28
AKSP_ANTP	0.00	0.00	0.00	0.00	0.00	0.00	0.58	0.78	-0.21	-0.21
ABSP_ANTP	0.00	0.00	0.00	0.00	0.00	0.00	1.91	0.44	1.46	1.46
AZURE_ANTP	0.00	0.00	0.00	0.00	0.00	0.00	0.47	0.83	-0.36	-0.36
TATA_ANTP	0.00	0.00	0.00	0.00	0.00	0.00	0.55	2.69	-2.14	-2.14
FRV_ANTP	0.00	0.00	0.00	0.00	0.00	0.00	0.52	1.03	-0.51	-0.51
NTPC_ANTP	0.00	0.00	0.00	0.00	0.00	0.00	2.50	2.71	-0.21	-0.21
GIWEL_TCN	0.00	0.00	0.00	0.00	0.00	0.00	8.38	4.99	3.40	3.40
MYTRAH_TCN	0.00	0.00	0.00	0.00	0.00	0.00	8.50	3.50	4.996	4.996
FRV_NPK	0.00	0.00	0.00	0.00	0.00	0.00	0.61	1.02	-0.41	-0.41
ORANGE_TCN	0.00	0.00	0.00	0.00	0.00	0.00	7.68	2.39	5.29	5.29
BETAM_TCN	0.00	0.00	0.00	0.00	0.00	0.00	1.93	1.13	0.79	0.79
SBG_PVGD	0.00	0.00	0.00	0.00	0.00	0.00	2.26	1.60	0.66	0.66
SBG_NPK	0.00	0.00	0.00	0.00	0.00	0.00	3.08	3.13	-0.05	-0.05
FORTUM_PVGD	0.00	0.00	0.00	0.00	0.00	0.00	1.45	1.35	0.11	0.11
PARAM_PVGD	0.00	0.00	0.00	0.00	0.00	0.00	1.69	2.04	-0.35	-0.35
YARROW_PVGD	0.00	0.00	0.00	0.00	0.00	0.00	0.99	0.49	0.49	0.49
TATA_PVGD	0.00	0.00	0.00	0.00	0.00	0.00	2.47	4.53	-2.06	-2.06
RENEW_PVGD	0.00	0.00	0.00	0.00	0.00	0.00	0.69	1.07	-0.38	-0.38
AKS_PVGD	0.00	0.00	0.00	0.00	0.00	0.00	0.56	0.61	-0.05	-0.05
ARS_PVGD	0.00	0.00	0.00	0.00	0.00	0.00	0.69	0.57	0.12	0.12
AVAADA_PVGD	0.00	0.00	0.00	0.00	0.00	0.00	3.37	2.12	1.25	1.25
ADY1_PVGD	0.00	0.00	0.00	0.00	0.00	0.00	1.15	0.62	0.53	0.53
ADY2_PVGD	0.00	0.00	0.00	0.00	0.00	0.00	1.11	0.69	0.43	0.43
ADY13_PVGD	0.00	0.00	0.00	0.00	0.00	0.00	1.04	0.81	0.23	0.23
NTPC STNS-ER	0.46	0.00	-0.46	3.11	0.00	-3.11	44.35	46.64	-2.29	-5.86
MAITHON POWER	0.00	0.00	0.00	0.00	0.00	0.00	3.67	5.20	-1.53	-1.53
NPGC	0.00	0.00	0.00	0.00	0.00	0.00	4.29	2.59	1.70	1.70
ADHUNIK POWER	121.27	0.00	-121.27	0.00	0.00	0.00	8.10	0.82	7.28	-113.99
CHUZACHEN HEP	9.34	0.00	-9.34	1.49	0.00	-1.49	0.64	0.62	0.03	-10.81
RANGIT HEP	0.00	0.00	0.00	0.00	0.00	0.00	0.49	0.65	-0.17	-0.17
GMR KAMALANGA	0.00	0.00	0.00	0.00	0.00	0.00	6.49	0.56	5.93	5.93
JITPL	65.88	0.00	-65.88	47.53	0.00	-47.53	5.41	1.36	4.05	-109.37
TEESTA HEP	0.00	0.00	0.00	0.00	0.00	0.00	0.25	4.87	-4.62	-4.62
DAGACHU	15.00	0.00	-15.00	0.00	0.00	0.00	2.63	0.02	2.61	-12.39
JORETHANG	0.00	0.00	0.00	11.24	0.00	-11.24	1.20	0.71	0.49	-10.76
NEPAL(NVVN)	0.00	153.29	153.29	0.00	0.00	0.00	4.69	8.77	-4.09	149.20
BANGLADESH	0.00	19.22	19.22	0.00	0.00	0.00	8.41	8.24	0.17	19.39
HVDC PUS	0.00	0.00	0.00	0.00	0.00	0.00	0.01	0.16	-0.15	-0.15
TEESTA STG3	0.00	0.00	0.00	136.50	0.00	-136.50	3.51	2.30	1.21	-135.30
DIKCHU HEP	0.00	0.00	0.00	9.36	0.00	-9.36	0.79	0.58	0.20	-9.16
HVDC ALPD	0.00	0.00	0.00	0.00	0.00	0.00	0.02	0.17	-0.15	-0.15
TASHIDENG HEP	0.00	0.00	0.00	9.15	0.00	-9.15	0.66	0.59	0.07	-9.08
BRBCL,NABINAGA	0.00	0.00	0.00	0.00	0.00	0.00	4.50	8.02	-3.52	-3.52
MTPS II	0.00	0.00	0.00	0.00	0.00	0.00	2.52	1.23	1.29	1.29
TALA HEP	0.00	0.00	0.00	0.00	0.00	0.00	43.60	0.04	43.56	43.56
CHUKHA HEP	0.00	0.00	0.00	0.00	0.00	0.00	8.51	13.72	-5.21	-5.21
KURICHU HEP	0.00	0.00	0.00	0.00	0.00	0.00	12.75	0.53	12.22	12.22
MANGDECHU HEP	0.00	0.00	0.00	0.00	0.00	0.00	3.99	4.26	-0.27	-0.27
NTPC STNS-NER	0.09	0.00	-0.09	0.00	0.00	0.00	5.92	2.09	3.83	3.74
NEEPCO STNS	0.00	0.00	0.00	0.00	0.00	0.00	1.29	7.96	-6.67	-6.67
RANGANADI HEP	0.00	0.00	0.00	0.00	0.00	0.00	0.96	1.40	-0.44	-0.44
DOYANG HEP	0.00	0.00	0.00	0.00	0.00	0.00	0.21	0.19	0.02	0.02
ONGC PALATANA	22.38	0.00	-22.38	0.05	0.00	-0.05	1.89	0.72	1.17	-21.26
LOKTAK	0.00	0.00	0.00	0.00	0.00	0.00	0.31	0.81	-0.50	-0.50
PARE HEP	0.00	0.00	0.00	0.00	0.00	0.00	0.11	0.41	-0.30	-0.30
Source: NLDC										
<i>* in case of a state, the entities which are "selling" also include generators connected to state grid and the entities which are "buying" also include open access consumers.</i>										
<i>** (-) indicates sale and (+) indicates purchase,</i>										
<i>*** Total net includes net of transactions through bilateral, power exchange and DSM</i>										

Table-20 : VOLUME AND PRICE OF RENEWABLE ENERGY CERTIFICATES (RECs) TRANSACTED THROUGH POWER EXCHANGES, MARCH 2020					
Sr. No.	Details of REC Transactions	IEX		PXIL	
		Solar	Non-Solar	Solar	Non Solar
A	Volume of Buy Bid	213710	480379	9482	309387
B	Volume of Sell Bid	39299	2644937	37336	2349090
C	Ratio of Buy Bid to Sell Bid Volume	5.44	0.18	0.25	0.13
D	Market Clearing Volume (MWh)	39299	480379	9383	309387
E	Weighted average Market Clearing Price (₹/MWh)	2400	1000	2400	1000

Source: IEX and PXIL

Note 1: 1 REC = 1 MWh

Note 2:

<i>Forbearance and Floor Price w.e.f 1st April 2017</i>		
Type of REC	Floor Price (₹/MWh)	Forbearance Price (₹/MWh)
<i>Solar</i>	<i>1000.00</i>	<i>2400.00</i>
<i>Non-Solar</i>	<i>1000.00</i>	<i>3000.00</i>